

BKD  
Please put phones on mute.  
Conversation  
Pull from ready set go intro.

## Today's Agenda: Three Questions

2

- What are the benefits at the local level to Dos Rios Continuum of Care (CoC) participation?
- What are HUD's requirements related to CoCs?
- What are the Dos Rios Planning Body expectations of local CoCs?

BKD

3

## Benefits of CoC Participation

AH

## CoC Basics

4

CoCs is a planning body that serves three **main purposes**:

- Develop long-term strategic planning and manage a year-round planning effort
- Coordinates policies, strategies and activities toward ending homelessness
- Apply for HUD homeless assistance grants and prioritize use of funding

Continuum of Care 101 p. 3, HUD, June 2009, <http://www.hudhre.info/documents/CoC101.pdf>.

- We'll talk more about year-round activities later, but the CoC is more than just a body to apply for HUD funds.

## CoC Membership

### Ideally includes representatives from

- Non-profit organizations (including those representing persons with disabilities)
- State and local government agencies
- Public housing agencies
- Community and faith-based organizations
- Housing developers
- Hospitals and medical representatives or other private health care associations
- Advocacy groups
- Law enforcement and corrections agencies
- School systems
- Private funding providers
- Persons who are/have been homeless
- Veteran service organizations
- Local workforce investment act boards
- Businesses
- Other homeless providers and service providers

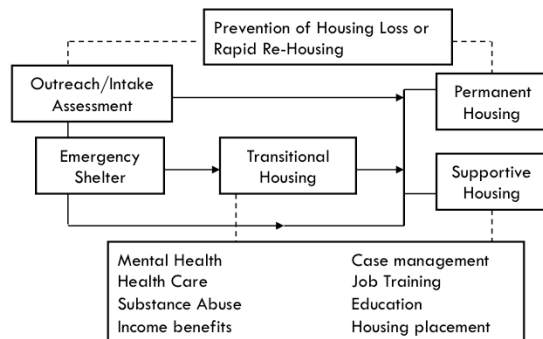
### SM/DS

Because your CoC is ideally working on all of the issues that impact homelessness in your community, it should have a broad base of members. A “model” CoC would have representatives from all of these different sectors – and perhaps others – to ensure that the strategies you’re hoping to implement are feasible and have buy-in from the different people involved.

(Give quick example – for instance, if your community has a big issue with people leaving correctional facilities and entering your shelters, it will likely help a lot to have someone from the correctional system participating in your CoC.) Every CoC is different and, particularly in more rural areas where people are really geographically spread out, and where there are fewer people, it’s hard to get everyone at the table.

## CoC Also Means...

A **system** of housing and services to **meet the needs** of people who are homeless or at imminent risk of homelessness



### SM/DS

In addition to meaning a group of stakeholder entities and organizations, Continuum of Care can also mean an overall system of housing and services designed to meet the needs of people who are homeless or at imminent risk of homelessness in the community. It includes everything from homelessness prevention through to permanent affordable housing.

Not all of these services are funded with the Homeless Assistance Grants, but it's important to highlight the larger universe of programs (or CoC) of which these grants are just a piece.

## Benefits of CoC Planning

7

- ❑ Coordinating and linking **resources**
- ❑ Encouraging **community “buy-in”** and access to mainstream resources
- ❑ **Increasing competitiveness** for HUD homeless assistance funding
- ❑ Assessing capacity and identifying **unmet needs**
- ❑ Taking a **proactive** rather than a reactive approach
- ❑ Identifying **common goals** for advocacy

•**Coordinating and linking resources:** Historically, homeless services have been fragmented at best. CoC planning helps providers to identify ways to coordinate and link resources to facilitate access for consumers, and to avoid duplication of effort and services and therefore promote a more strategic use of funds within the community.

•**Encouraging community “buy-in” and access to mainstream resources:** CoC planning ideally involves stakeholders outside of the traditional homeless system with the goal of educating these stakeholders and getting them to become part of the solution. For example, the city housing department could include a set-aside of HOME funds for tenant-based rental assistance to transition homeless women and their children to permanent housing.

•**Increasing competitiveness for HUD homeless assistance funding:** Comprehensive and inclusive CoC planning makes communities highly competitive for receipt of homeless assistance funding through the HUD SuperNOFA process. The CoC plan can also be useful in leveraging other resources needed to build a comprehensive system to address homelessness.

•**Assessing capacity and identifying unmet needs:** CoC planning provides communities with an opportunity to step back, critically assess capacity, and develop solutions to move persons experiencing homelessness towards permanent housing and self-sufficiency.

•**Taking a proactive rather than reactive approach:** CoC planning helps communities look comprehensively at homelessness from the local perspective and identify needed or imminent policy changes. For example, new drug therapies for persons living with HIV/AIDS changed the models of supportive housing most appropriate for this population (i.e., from end-of-life hospice facilities to permanent supportive housing with return-to-work support). It also helps communities develop the capacity to respond more quickly to these changing needs and circumstances.

•**Identifying common goals for advocacy:** CoC planning helps communities develop a common vision and a set of common goals. The development of a single, coordinated “message” on needs and approaches to elected officials and funders is extremely important to the success of continuums.

Continuum of Care 101 pp. 15-16, HUD, June 2009, <http://www.hudhre.info/documents/CoC101.pdf>.

## Advantages of Regional Approach

8

- ❑ **Critical mass** to maximize funding potential
- ❑ **Economies of scale** reduce administrative burdens
- ❑ **Increased visibility** of homeless needs
- ❑ **Shared expertise** among jurisdictions
- ❑ Greater participation of governmental, non-profit, and private **stakeholders**
- ❑ Improved **coordination of services** across county lines for transient population

Continuum of Care 101 pp. 47-49, HUD, June 2009, <http://www.hudhre.info/documents/CoC101.pdf>.

Merging with Another Continuum of Care p.3, HUD, 2011, [http://hudhre.info/documents/FY2011\\_CoCMergingGuide.pdf](http://hudhre.info/documents/FY2011_CoCMergingGuide.pdf).

**Critical Mass:** HUD's designated funding levels for rural counties can be rather small, which makes it difficult to design new housing and services projects; combining forces can increase the overall amount the combined CoC is eligible to apply for, making it easier to create programs.

**Economies of Scale:** HUD CoC funding requires a very large amount of administrative work, like organizing homeless counts and managing and HMIS, and provides few administrative resources. In a regional continuum of care, instead of each county struggling to meet the administrative requirements separately, one centralized person or office can perform all of the administrative tasks.

**Shared Expertise:** For example, if one county needs support from SSA, VA or local government, and another county has a connection in place, it's much simpler to access support.

**Coordination:** As you know, people are not stationary – governmental boundaries are somewhat arbitrary, and people frequently move across them. In homeless services and housing, this can make it harder to serve people who move between counties. A regional approach improves coordination and ability to serve these folks.



## Benefits of CoC Membership


9

- **Networking, partnership, and collaboration** with other CoC member agencies
- Access to collaborative and federal **funding opportunities**
- Ability to **influence** local homelessness policy
- Access to **trainings** to improve practices
- Increase **efficiency** by eliminating duplicate services
- Access to **data**

Policies and Procedures p. 8, Kings/Tulare Continuum of Care on Homelessness, June 8, 2012, [http://kingstularecoc.org/wp-content/uploads/2012/06/KT-Coc-Policies-and-Procedures\\_Updated-June-2012.pdf](http://kingstularecoc.org/wp-content/uploads/2012/06/KT-Coc-Policies-and-Procedures_Updated-June-2012.pdf)

Influence policy: decisions are made by those who show up

Access to data: CoC collects data through the HMIS, and is required to report annually to HUD about the status of homelessness and services in the community.



How would **you**  
like to benefit from  
CoC participation?

AH

11

## HUD CoC Requirements

BKD

## HUD Competitive Funding

12

- To receive competitive homeless assistance funds, HUD requires **systemic planning** at the local level through the Continuum of Care approach
- **CoCs select projects** to be submitted for funding consideration on behalf of their geographic area

Framework and Themes: Overview of the CoC Program p. 6, HUD, Oct. 2010, [http://www.hudhre.info/documents/FrameworkandThemes\\_OverviewofCoC\\_Presentation.pdf](http://www.hudhre.info/documents/FrameworkandThemes_OverviewofCoC_Presentation.pdf).

## HUD's CoC Program Purposes

13

- Promote community-wide commitment to the goal of ending homelessness
- Provide funding to quickly rehouse homeless individuals and families while minimizing the trauma and dislocation caused by homelessness
- Promote access to, and effective utilization of, mainstream programs
- Optimize self-sufficiency among people experiencing homelessness

## HUD Rating Criteria

14

HUD rating criteria must include:

- Performance
- Planning
- Priorities
- Public & Private Funding
- Access to Mainstream Programs
- Other Populations

Framework and Themes: Overview of the CoC Program p. 9, HUD, Oct. 2010, [http://www.hudhre.info/documents/FrameworkandThemes\\_OverviewofCoC\\_Presentation.pdf](http://www.hudhre.info/documents/FrameworkandThemes_OverviewofCoC_Presentation.pdf).

## Example of HUD Calendar

15

**January**- Point in Time Count

**March/April**- Housing Inventory Count

**July**- CoC Registration

**September/October/November**- HUD application

This calendar varies year to year.

Leaves out HMIS, performance measurement, training, various other processes, like CoC Check Up/

## CoC Board Planning Tasks

16

1

- Coordinate CoC homeless assistance **funding applications**

2

- Collect needs **data**

3

- Determine and prioritize **gaps** in the CoC homeless system

4

- Develop strategies and **action plans**

5

- **Implement** action steps in accordance with the CoC Plan





- Coordinate CoC homeless assistance **funding applications**

17

- Manage and oversee the preparation of the HUD application (**Exhibit One**)
- Facilitate an equitable **rating and ranking process** for HUD funding program applicants
- Assist projects with **Exhibit Two** of HUD application
- **Receive, distribute, evaluate, and monitor funds** from HUD (if acting as Unified Funding Agency)
- Pursue **additional funding** opportunities

Mention HUD Crud

- Organize and lead **needs assessment activities**, including a annual sheltered **point-in-time count** and a biannual unsheltered point in time count
- Coordinate region-wide participation with **HMIS**
- Gather current **housing inventory**

**Accurate data is key to analyzing and reporting performance.**

**Important for HUD application and community progress.**

3

- Determine and prioritize **gaps** in the CoC homeless system

19

- **Identify gaps** in the system and unmet needs through community dialogue and data analysis
- Communicate **continuum-wide priorities**
- Coordinates with **other systems of care**

- Coordinate the development of a **plan to end homelessness**
- Build partnerships and system **coordination**
- Maintain **contact with state, county, and federal agencies** that work on issues impacting the homeless population
- Keep abreast of and participate in **legislative issues** affecting homelessness

Mention discharge planning and mainstream program access

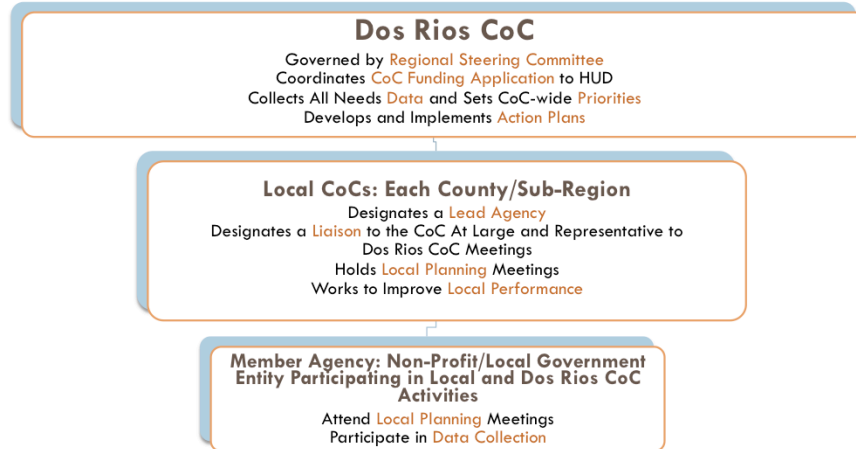
- Measure **performance** and **assess progress** of system change
- Keep members informed through **regular reporting of progress** on the CoC's goals, objectives, and strategic plans, including committee reports and all other relevant matters
- Arrange **technical assistance** and **training** to providers as needed

BKD

AH

# How Does the Dos Rios CoC Work?

23



AH

## Lead Agency

24

- Each County agrees to designate a **lead agency**
- Roles of the lead agency:
  - ▣ Represent their county's interests
  - ▣ Meet **Local CoC duties** and duties to the **Regional CoC**

AH



## Local CoC Duties: Meetings, Members

25

- Local CoC **meetings** four times per year
- Keep **notes** at CoC meetings and **membership logs**
- Annual discussion on **discharge planning** and access to **mainstream resources**
- **Local providers** identified and invited
- Local providers complete **membership application**

AH

## Local CoC Duties: Liaison, MOUs

26

- CoC designates a liaison with the **community at large** to provide information about the CoC's activities
- **Educational Liaison** updates the community about CoC activities
- **MOUs** updated annually to reflect **discharge agreements** and **mainstream resources** (including relationship with Educational Liaison)

AH

## Local CoC Duties: Performance

27

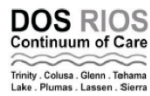
- Work to **prevent duplication of services** among agencies
- Reduce **gaps in service to homeless** and at-risk populations
- Help local agencies to **meet CoC performance outcomes** set by HUD
- Encourage members and community stakeholders to complete **needs surveys** and **action priorities**

AH

## Duties to Regional CoC: Membership

28

- **Membership application** updated annually



### DOS RIOS CONTINUUM OF CARE

#### Membership Application for Counties

Date:

##### Applicant Information

Application Type: ☐ Membership Information Update ☐ New Membership

County: \_\_\_\_\_

CoC Chairperson: \_\_\_\_\_

Address: \_\_\_\_\_

*Street Address*

*Mailing Address (if different)*

*City*

*County*

*State*

*ZIP Code*

BKD

**Introduced membership application—each county annually state lead agency, designate committee representative, sharing costs of CoC in the fall—establish dues annually. May 21, 2012**

## Duties to Regional CoC: Membership

29

- Participate in setting and collecting the annual Dos Rios CoC **membership fees**
- Advise on Dos Rios CoC **staffing requirements**

BKD

**Introduced membership application—each county annually state lead agency, designate committee representative, sharing costs of CoC in the fall—establish dues annually. May 21, 2012**

## Duties to Regional CoC: Committees

30

- Appointed designee to represent the county and **actively participate** at:
  - Regional Steering Committee
  - Regional Annual Point in Time Count Committee
  - Regional HMIS Committee
- Designee must understand that participation in the Dos Rios CoC Committees is one of the priorities when HUD scores the funding application.

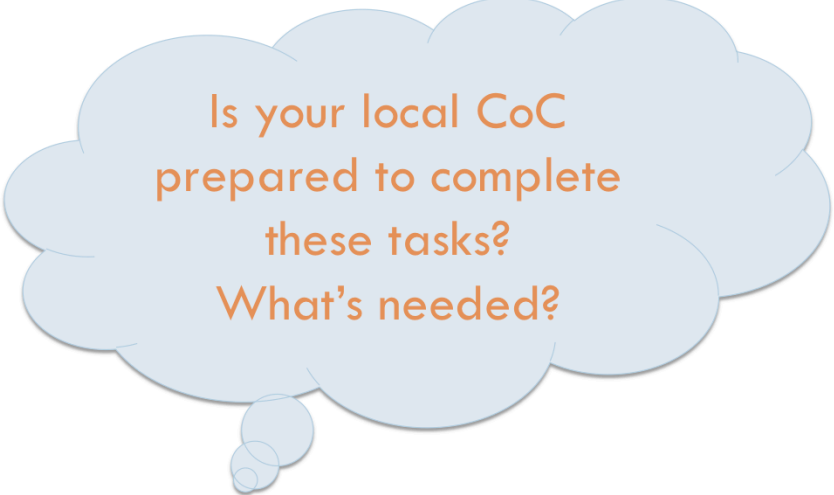
BKD

## Duties to Regional CoC: Data, Evaluation

31

- Member agencies provide **accurate data** in a **timely** fashion-- failure to provide such data could result in loss of funding for funded agencies
- Members participate in the development of **evaluation and selection criteria** to determine Dos Rios CoC priorities

BKD



Is your local CoC  
prepared to complete  
these tasks?  
What's needed?

BKD



## Dos Rios CoC Staff will...

33

- Organize the **regional planning process**
- Prepare the **annual application** and assist applicants with project application
- Facilitate an **equitable rating and ranking** process for projects
- Develop/maintain **collaborative relationships**

BKD

Mention HUD crud again

## Regional Staff: CoC Coordinator will...

34

- Ensure **compliance with HUD** CoC process.
- Coordinate Dos Rios regional **meetings** and maintain records
- Participate in Northern California/Central Valley Homeless Roundtable Meetings.
- Coordinate **data collection** (annual point-in-time homeless count, HMIS, housing inventory).

BKD

## Upcoming Webinars

35

- Dates to be announced; **please respond to Lauren's Doodle poll**
- **HEARTH and the Dos Rios CoC**
- **Performance of Dos Rios Programs**

AH